

ATDI s.a. 8, rue de l'Arcade 75008 Paris France Tel +33 (0)1 53 30 89 40 Fax +33 (0)1 53 30 89 49 atdi@atdi.com www.atdi.com	ATDI Ltd. Kingsland Court, Three Bridges Road Crawley West Sussex, RH10 1HL - UK Tel +44 (0)1293 522 052 Fax +44 (0)1293 522 521 northern-europe@atdi.co.uk www.atdi.co.uk	ATDI Ibérica c/ Orense, 8 Piso 12-D (Nuevos Ministerios) 28020 Madrid - Spain Tel +34 91 598 21 36 Fax +34 91 597 03 03 iberica@atdi.com www.atdi.es	ATDI Inc. 1420 Beverly Road, Suite 140 McLean, VA 22101 USA Tel +1 703 848 4750 Fax +1 703 848 4752 americas@atdi.com www.atdi-us.com	ATDI Est Bd. Aviatorilor, 59 Bucharest Romania Tel +40 21 222 42 10 Fax +40 21 222 42 13 eastern-europe@atdi.com www.atdi.ro	OOO ATDI Sadovnicheskaya st. 72 bld 1 115035 Moscow Russian Federation Tel: +7 095 252 96 10 Fax: +7 501 408 50 74 moscow@atdi.com www.atdi.ru	ATDI PTY Ltd 79 Macarthur St - Ultimo NSW 2007 Australia Tel: +61 (0)2 9213 2200 Tel/Fax: +61 (0)2 9213 2299 south-pacific@atdi.com www.atdi-pacific.com
--	---	---	--	--	---	--



Main features

Main features:

- Considers up to 128 panels on the structure
- Provides real time adjustment of the panels with immediate recalculation of the pattern
- Uses real antenna elements from manufacturers data
- Includes a new graphical antenna elements editor
- Calculates vertical, horizontal and circularly polarized arrays
- Models the effect of changes in coupling
- Provides new wizards for phase and skew settings
- Allows to compensate for zeros in patterns
- Display patterns in polar or Cartesian formats
- Visualizes patterns in 3D
- Calculates gain and three dimensional polar response
- Exports 3D data direct to ICS telecom nG and HTZ warfare nG
- Exports 2D data to other planning tools
- Exports ASCII 3D pattern
- Prints reports on pattern and structure

Hardware requirements:

- Processor Intel, AMD 2GHz or more, Intel Centrino 1,4 GHz
- Hard disk: 500 Mb of free space after set-up of program
- 512 Mb of RAM
- 17 inches screen
- AGP graphic adapter with 32 Mb of & 3D graphic accelerator
- Windows 2000 SP4, XP SP2, 2003 SP1, Windows XP Professional x64 edition
- CD/DVD writer for backup

ATDI product range

ICS telecom nG

ICS telecom nG is the key package in a planner's toolkit. It is capable of modeling radio systems of any size from intensive local areas to extensive countrywide regions.



ICS manager nG

ICS manager nG is a software platform dedicated to advanced RF spectrum management. Initially targeted at regulators, its flexibility and ease of use is of great value to operators as well. The ICS manager nG platform is based on the guidelines of recommendation ITU-R. SM.1370



HTZ warfare nG

HTZ warfare nG is a comprehensive radio planning software application for civil and military networks. It can be configured to be the specialist toolbox for electronic warfare mission planning, technical spectrum management, network planning...



ICS mapserver

ICS mapserver is an advanced software system designed to create and manage digital cartography datasets. The latest release of ICS mapserver integrates a large number of new functionalities.



Antios

- **Antenna design**
- **2D & 3D visualization**
- **Antenna systems optimization**





The third dimension in antenna design

As the radio spectrum becomes more congested, our need to critically engineer antennas to match both frequency plans and coverage requirements has increased dramatically. Broadcast and mobile communications engineers must synthesize electrically complex arrays with specific polar responses for each site to meet given response masks or null interference.

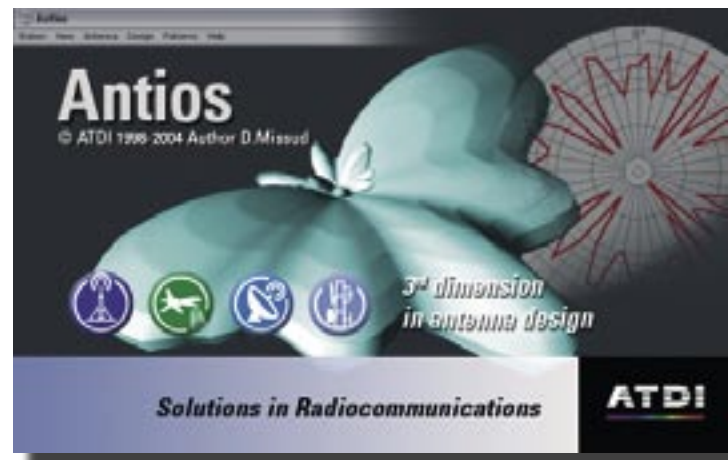
The modeling of such complex arrays has traditionally been a highly complicated task that is until the arrival of Antios.

Antios allows the engineer to design any array using multiple unitary dipoles spaced around the support structure in both horizontal and vertical axes, with each level containing differing numbers of elements.

The result is a complete three dimensional expression of polar response and a specification of the antenna elements, mechanical positions of the antenna elements, mechanical positions and relative phasing required to produce it.

Antios presents a completely remodeled user interface as well as new functions that facilitate the optimization of antenna systems. Version 1 already proposed all the functions allowing for the calculation of send-out charts in 2D and 3D resulting from the various antennas' coupling on the same station. Advanced display functions made it possible to analyze the antenna diagram in all directions.

Antios includes from now on the diagram visualization in real time as



the user modifies the mechanical and electric configuration of antennas. A very complete editor allows the user to type in the parameters of each unit antenna as a function of frequency. Of

course, Antios is more than ever compatible with ICS telecom nG, HerTZ mapper and HTZ warfare nG software.

Compatibility with ATDI's tools

ICS telecom nG

ICS telecom nG is the key package in a planner's toolkit. It is capable of modeling radio systems of any size from intensive local areas to extensive countrywide regions.

ICS telecom nG enables the planning engineer to develop rapidly and economically wide networks. It features applications throughout all modern radio networks, both fixed and mobile and across the frequency range 10 kHz to 450 GHz.

ICS telecom nG integrates easily with an existing environment, whatever its size or structure, in local mode or within a corporate network.



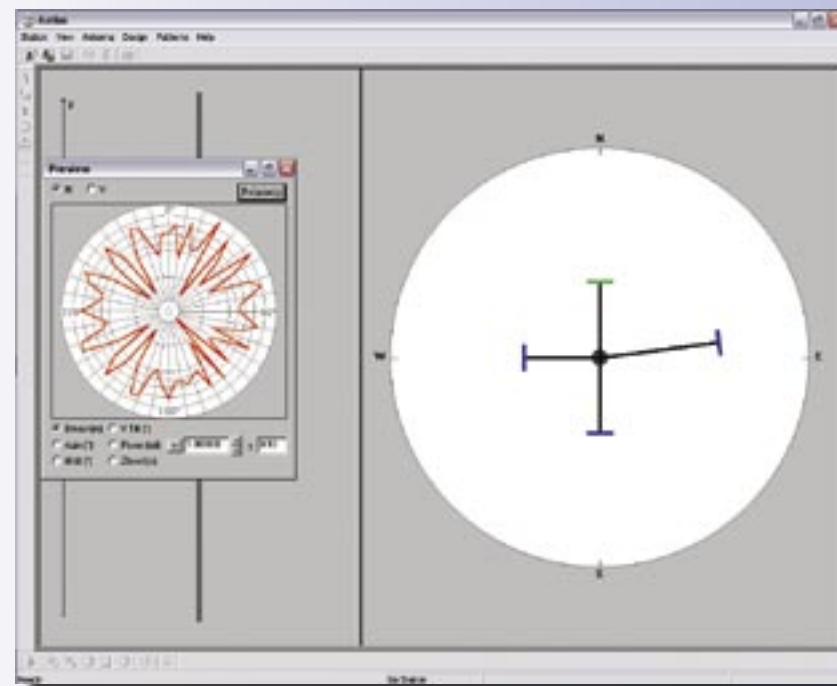
HTZ warfare nG

HTZ warfare nG is a comprehensive radio planning software application for civil and military networks. HTZ warfare nG can be configured by the user to be the specialist toolbox for electronic warfare mission planning, technical spectrum management, network planning or just as a simple coverage and link planning tool for field operations. HTZ warfare nG is designed to allow integration into other systems, like system mission planning suites, spectrum management/monitoring systems or individual system frequency management packages.



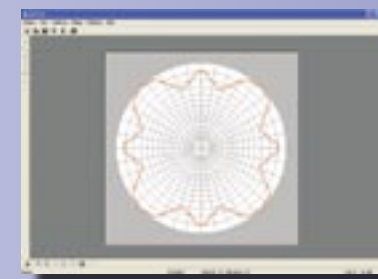
Find more information on the ATDI product range on our website www.atdi.com

User interface



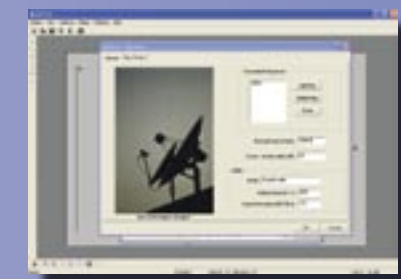
Equivalent radiation pattern from several panels

Horizontal pattern



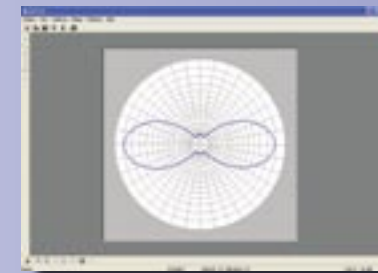
Antios allows the engineer to design any horizontal and vertical pattern

Station definition



Manage your station database using a dedicated Graphical User Interface

Vertical pattern



Export the resulting horizontal and vertical pattern to other tools, including ICS telecom nG and HTZ warfare nG

3D view of an antenna



Antios includes 3D diagram visualization

