



### Standard

- ◆ DVB-T/H: EN 300 744, EN 302 304
- ◆ DVB-T2: EN 302 755, TS 102 831, EN 102 773

### RF Input

- ◆ 1xRF input-BNC-50Ω
- ◆ Input Sensitivity:-95dBm ±3dB
- ◆ Input Frequency: 48MHz - 862MHz
- ◆ Bandwidth: 6MHz, 7MHz, 8MHz

### TS Input

- ◆ 1xTS input, BNC female-50Ω
- ◆ Data Format: 188/188+8(+8)/204 bytes
- ◆ Burst or Packet mode,
- ◆ Bit Rate: 50Mbps max

### Demodulation

- ◆ Support Two Inputs: RF and TS
- ◆ Real-time demodulation and measurement process
- ◆ All DVB-T2 modes supported including Single & Multi-PLPs
- ◆ Transmission mode Monitoring, including FFT, GI, Constellation, Cell\_ID, LDPC, etc.
- ◆ 1x PLP decoded at the same time
- ◆ Automatic L1-Signalling decoding
- ◆ Automatic constant rate TS output
- ◆ Null packet insertion

### RF Measurement

- ◆ Full band input level: -50dBm to -10dBm
- ◆ Channel Input level: -90dBm to -30dBm
- ◆ MER: up to 36 dB ±1dB

- ◆ Shoulders: > 44 dB
- ◆ SNR, Pre LDPC BER, Pre BCH BER, FER
- ◆ T2 symbols per T2 frame
- ◆ Tone Reservation, ISSY, PLP Id List
- ◆ Carrier Frequency Offset
- ◆ Measurement Display
  - Constellation
  - Signal Spectrum
  - Channel Impulse Response
- ◆ Monitoring Display
  - SFN Windows
  - Signal Power Bar Graph
  - Recovery Transmission Modes

### TS Measurement

- ◆ Stream management
- ◆ MPEG-TS Figures: TS\_Sync, Continuity\_count\_error, PCR jitter, PCR repetition and PTS difference
- ◆ TS/ IP data rate

### TS Output

- ◆ TS output via ASI port, BNC female connector
- ◆ TS streaming over IP output, RJ-45 connector

### Control port

- ◆ Serial control protocol via RS-232/-485
- ◆ TCP/IP control interface Via Ethernet

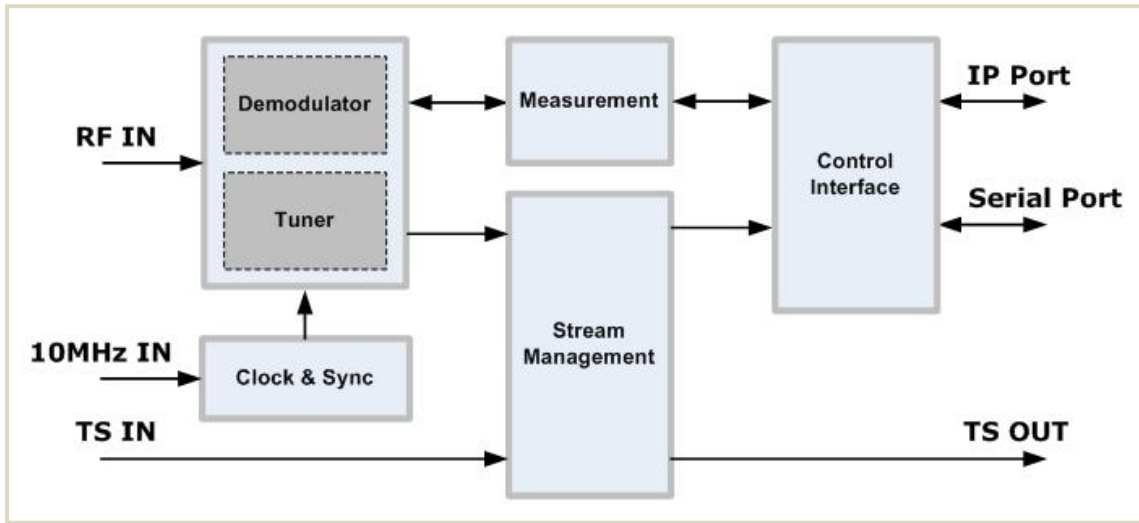
### Physical

- ◆ Supply voltage: AC 220V-DC 12V Adapter, 15W
- ◆ Aluminium package (224X378X266mm)
- ◆ Operating temperature range :0 °C to 50 °C

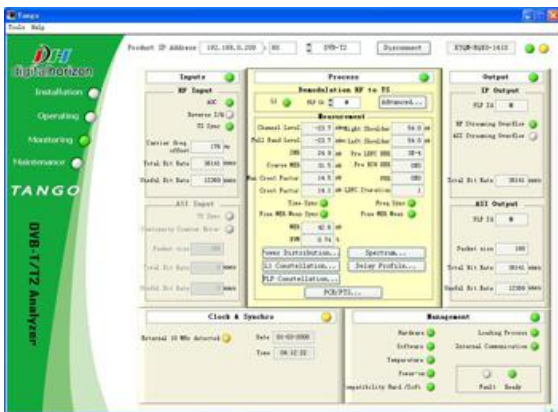




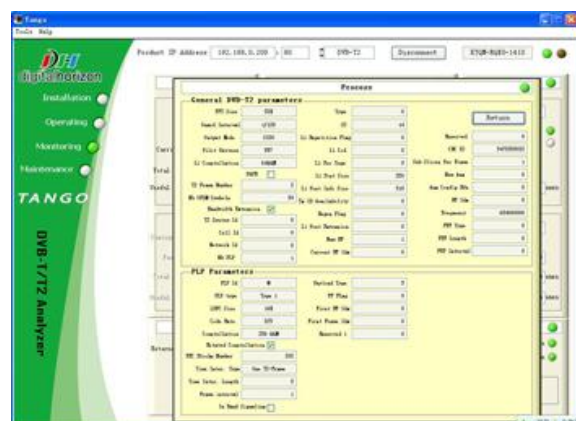
**Block Diagram:**



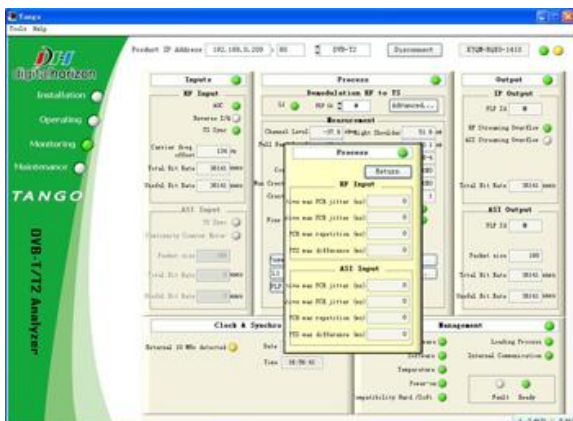
**Configuration and Monitoring Screen:**



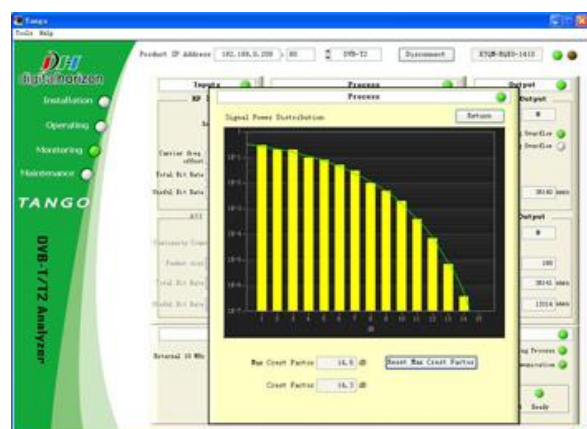
**General Monitoring**



**Advanced Monitoring**

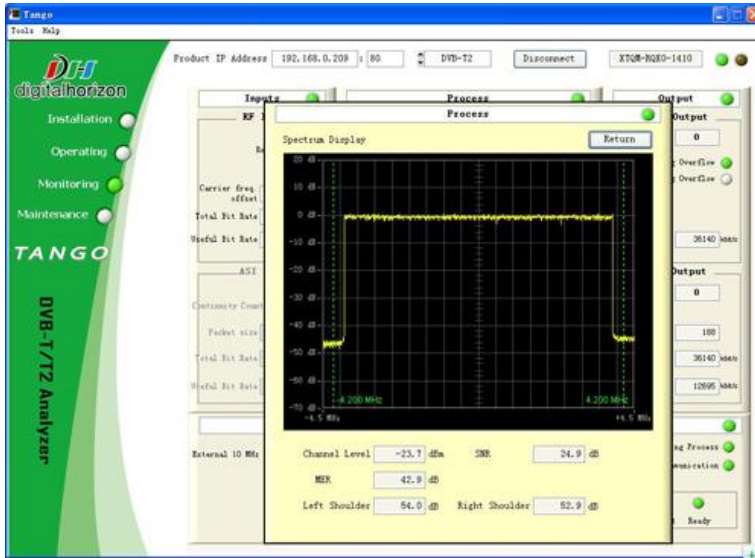


**PCR/PTS Monitoring**

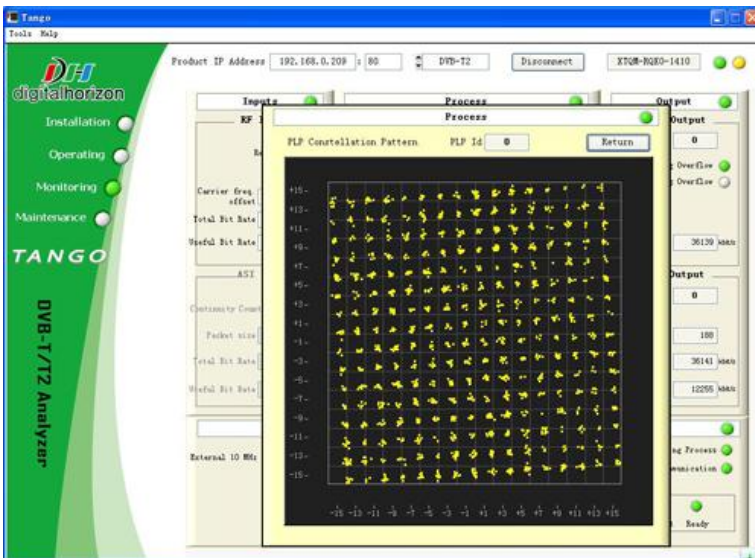


**Power Distribution Monitoring**

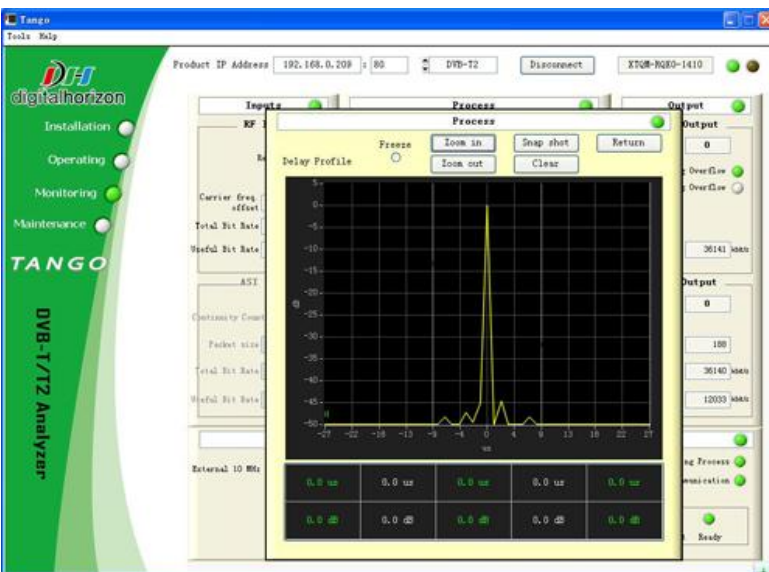




Spectrum Analyzer



Constellation



Delay Profile

